



**Ministry of Social Affairs of Estonia  
Department of Statistics and Analysis,  
Medical Statistics Bureau**

**Latvian Health Statistics and Medical  
Technology Agency, Health Statistics  
Department**

**Lithuanian Health Information Centre**

***Health in the Baltic Countries  
2003  
12-th edition***

**2004**



---

UDK 31:61 (474)  
He-04

Ministry of Social Affairs of Estonia,  
Gonsiori 29, 15027 Tallinn, Estonia  
Phone: 372-6269301,  
Fax: 372-6992209,  
E-mail: [smin@sm.ee](mailto:smin@sm.ee)  
Website: [www.sm.ee](http://www.sm.ee)

Health Statistics and Medical Technology State Agency,  
Duntes 12/22, Riga LV 1005, Latvia  
Phone: 371-7501590  
Fax: 371-7501591  
E-mail: [medstat@vsmta.lv](mailto:medstat@vsmta.lv)  
E. Lavendelis, director

Lithuanian Health Information Centre,  
Kalvariju 153, 08221, Vilnius, Lithuania  
Phone: 370-5-2773301  
Fax: 370-5-2773302  
E-mail: [lsic@lsic.lt](mailto:lsic@lsic.lt)  
Website: [www.lsic.lt](http://www.lsic.lt)  
Dr. A. Gaižauskiene, director

---

## Health in the Baltic Countries 2003

---

### Editorial board:

#### Estonian Medical Statistics Bureau:

E. Palo, Dr. M. Rätsep, M. Ruuge, H. Thomson

#### Latvian Health Statistics and Medical Technology Agency:

Dr. J. Karaškevica, Dr. D. Mihalovska, L. Golosujeva

#### Lithuanian Health Information Centre:

Dr. A. Gaižauskiene, R. Gaidelyte

The edition was prepared by:

Health Statistics and Medical Technology Agency, Latvia  
I.Karashkevics, Technical secretary

ISSN 1392-3943

## Preface

The eleventh edition “Health in the Baltic Countries 2003” presents the latest available health statistics data in the Baltic Countries – The Republic of Estonia, The Republic of Latvia, The Republic of Lithuania and comprises main population health area – demographic trends, causes of death, selected diseases occurrence as well as health care resources and utilization.

Basic sources of data – annual and special reports of medical institutions, computerized health databases and registers, certain vital statistics data are drawn from official publications of State Statistics Offices of the Baltic Countries.

The bulletin is a joint issue of Ministry of Social Affairs of Estonia, Department of Statistics and Analysis, Medical Statistics Bureau, Latvian Health Statistics and Medical Technology Agency, Lithuanian Health Information Centre. More comprehensive data may be obtained from these institutions.

## Population at 01.01.2004\*

	<b>Estonia</b>	<b>Latvia</b>	<b>Lithuania</b>
<b>Population (thousand)</b>	1356.0	2319.203	3445.9
<b>Per 1 km<sup>2</sup></b>	30.0	35.9	52.8
<b>Urban (thousand)</b>	902.8	1573.48	2297.4
<b>%</b>	66.6	67.8	66.7
<b>Rural (thousand)</b>	453.2	745.7	1148.5
<b>%</b>	33.4	32.2	33.3
<b>Males (thousand)</b>	625.0	1068.3	1608.7
<b>%</b>	46.1	46.1	46.7
<b>Females (thousand)</b>	731.1	1250.9	1837.2
<b>%</b>	53.9	53.9	53.3
<b>Under working age (%)</b>	18.2	15.4	19.2
<b>Working age (%)</b>	60.5	62.8	60.9
<b>Over working age (%)</b>	21.3	21.8	19.9
<b>Working age</b>			
<b>Males</b>	16-63	15-61	16-62
<b>Females</b>	16-58	15-58	16-58

\*Data for Estonia – 01.01.2003

## Health in the Baltic countries

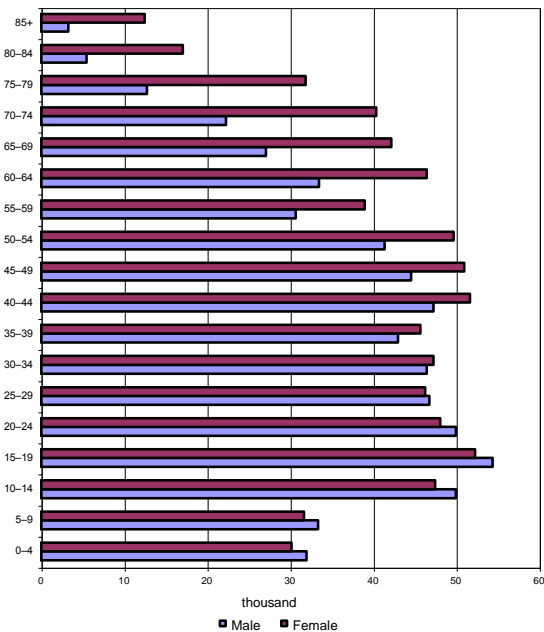
### General data\*

	Estonia	Latvia	Lithuania
Official name of the state	Republic of Estonia (Eesti Vabariik)	Republic of Latvia (Latvijas Republika)	Republic of Lithuania (Lietuvos Respublika)
Independence Day	24 February (1918)	18 November (1918)	16 February (1918)
State's governing body	Parliament (Riigikogu), 101 members, elected for the period of 4 years	Parliament (Saeima), 100 members, elected for the period of 4 years	Parliament (Seimas), 141 members, elected for the period of 4 years
Governmental structure	Republic, the President is elected for the period of 5 years	Republic, the President is elected for the period of 4 years	Republic, the President is elected for the period of 5 years
Area (thousand km <sup>2</sup> )	45.2	64.6	65.3
Major islands	Saaremaa, 2671 km <sup>2</sup> Hiiumaa, 989 km <sup>2</sup> Muhu, 198 km <sup>2</sup>	-	-
Major rivers	Võhandu, 162 km (through lake Tamula) Pärnu, 144 km Põltsamaa, 135 km	Daugava, 1005 km Gauja, 452 km Venta, 346 km	Nemunas, 937.4 km Neris, 509.5 km Venta, 346 km
Major lakes	Peipsi, 3555 km <sup>2</sup> (in Estonia 1529 km <sup>2</sup> ) Võrtsjärv, 271 km <sup>2</sup> Narva veehoidla (artificial lake) 191 km <sup>2</sup> (in Estonia 38 km <sup>2</sup> )	Lubāns, 80.7 km <sup>2</sup> Rāzna, 57.6 km <sup>2</sup> Engure, 40.5 km <sup>2</sup>	Drūkšiai, 44.8 km <sup>2</sup> Dysnai, 24.4 km <sup>2</sup> Dusia, 23.3 km <sup>2</sup>
The highest point	Suur Munamägi, 318 m	Gaiziņkalns, 311.6 m	Juozapinė, 293.6 m
Average daily temperature in January 2003	-2.4°C	-4.6°C	-5.0°C
Average daily temperature in July 2003	+19.1°C	+21.4°C	+20.0°C
Average daily temperature in 2003	+6.2°C	+7.1°C	+7.0°C
Administrative units	15 counties, 39 cities, 8 cities without municipal status, 202 rural municipalities	19 counties, 26 districts, 77 cities and towns, 453 rural municipalities	10 counties, 106 cities and towns, 56 rural municipalities
Capital, inhabitants (thousand)	Tallinn 397.0	Riga 735.2	Vilnius 552.8
Official language	Estonian	Latvian	Lithuanian
National currency	Estonian kroon=100 sents 1 EEK = 0.064 EUR	Latvian lats=100 santims 1 LVL = 1.55 EUR	Lithuanian lits=100 centas 1 LTL = 0.290 EUR

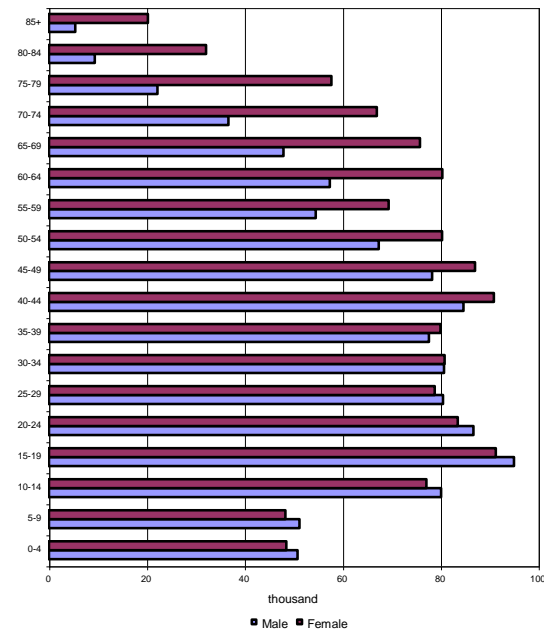
\*Data for Estonia - 2002



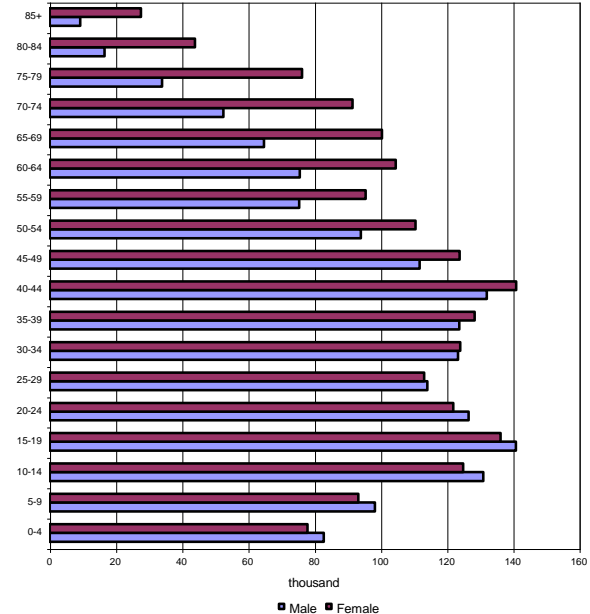
Population by age at 01.01.2004 (Estonia – 01.01.2003)



Estonia

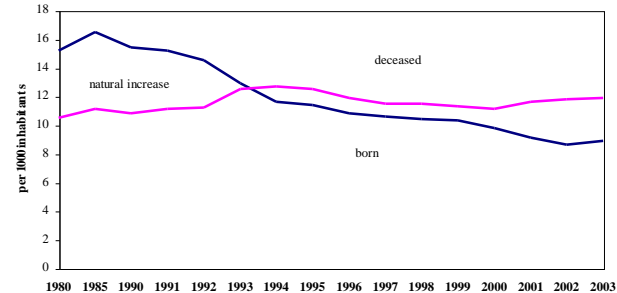
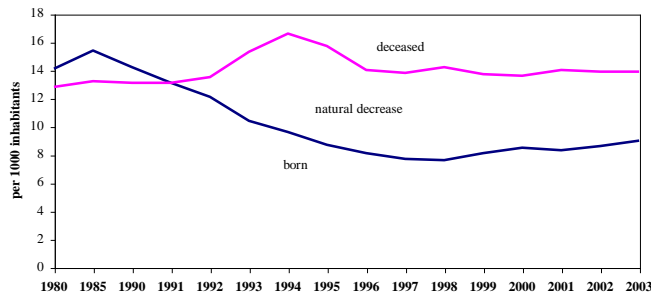
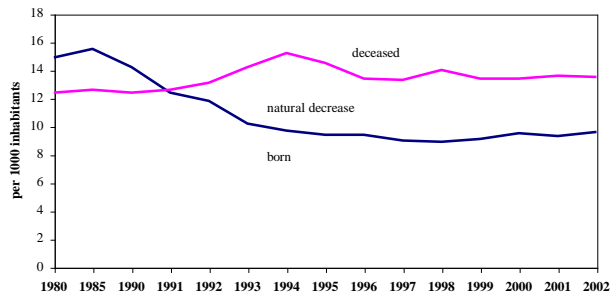


Latvia



Lithuania

Trends of demographics indicators



## Health in the Baltic countries

### Resident population by age and sex at 01.01.2004\*

	Estonia						Latvia						Lithuania					
	Total		Males		Females		Total		Males		Females		Total		Males		Females	
	Number	%	Number	%	Number	%	Number	%	Number	%	Number	%	Number	%	Number	%	Number	%
Total	1356045	100.0	624961	100.0	731084	100.0	2319203	100	1068336	100	1250867	100	3445857	100.0	1608687	100.0	1837170	100.0
0-4	62175	4.6	32012	5.1	30163	4.1	99487	4.3	50872	4.8	48615	3.9	160910	4.7	82867	5.2	78043	4.2
5-9	65107	4.8	33436	5.4	31671	4.3	99673	4.3	51256	4.8	48417	3.9	191826	5.6	98435	6.1	93391	5.1
10-14	97479	7.2	49985	8.0	47494	6.5	157345	6.8	80179	7.5	77166	6.2	256041	7.4	131090	8.1	124951	6.8
15-19	106728	7.9	54436	8.7	52292	7.2	186565	8.0	95138	8.9	91427	7.3	277199	8.0	140901	8.8	136298	7.4
20-24	98131	7.2	50013	8.0	48118	6.6	170411	7.3	86835	8.1	83576	6.7	248838	7.2	126700	7.9	122138	6.6
25-29	93094	6.9	46842	7.5	46252	6.3	159500	6.9	80640	7.5	78860	6.3	227478	6.6	114202	7.1	113276	6.2
30-34	93792	6.9	46481	7.4	47311	6.5	161760	7.0	80832	7.6	80928	6.5	247678	7.2	123466	7.7	124212	6.8
35-39	88712	6.5	43018	6.9	45694	6.3	157741	6.8	77685	7.3	80056	6.4	252451	7.3	123936	7.7	128515	7.0
40-44	99016	7.3	47275	7.6	51741	7.1	175785	7.6	84812	7.9	90973	7.3	273306	7.9	132193	8.2	141113	7.7
45-49	95566	7.0	44554	7.1	51012	7.0	165522	7.1	78408	7.3	87114	7.0	235928	6.8	111899	7.0	124029	6.8
50-54	91131	6.7	41446	6.6	49685	6.8	147909	6.4	67540	6.3	80369	6.4	204836	5.9	94134	5.9	110702	6.0
55-59	69710	5.1	30717	4.9	38993	5.3	124056	5.3	54574	5.1	69482	5.6	171110	5.0	75506	4.7	95604	5.2
60-64	79954	5.9	33478	5.4	46476	6.4	138061	6.0	57515	5.4	80546	6.4	180355	5.2	75678	4.7	104677	5.7
65-69	69308	5.1	27144	4.3	42164	5.8	123861	5.3	47998	4.5	75863	6.1	165388	4.8	64937	4.0	100451	5.5
70-74	62676	4.6	22274	3.6	40402	5.5	103901	4.5	36802	3.4	67099	5.4	144178	4.2	52591	3.3	91587	5.0
75-79	44707	3.3	12846	2.1	31861	4.4	80145	3.5	22336	2.1	57809	4.6	110546	3.2	34105	2.1	76441	4.2
80-84	22520	1.7	5454	0.9	17066	2.3	41680	1.8	9454	0.9	32226	2.6	60729	1.8	16681	1.0	44048	2.4
>=85	15798	1.2	3285	0.5	12513	1.7	25801	1.1	5460	0.5	20341	1.6	37060	1.1	9366	0.6	27694	1.5
Unknown	441	0.0	265	0.0	176	0.0	-	-	-	-	-	-	-	-	-	-	-	-

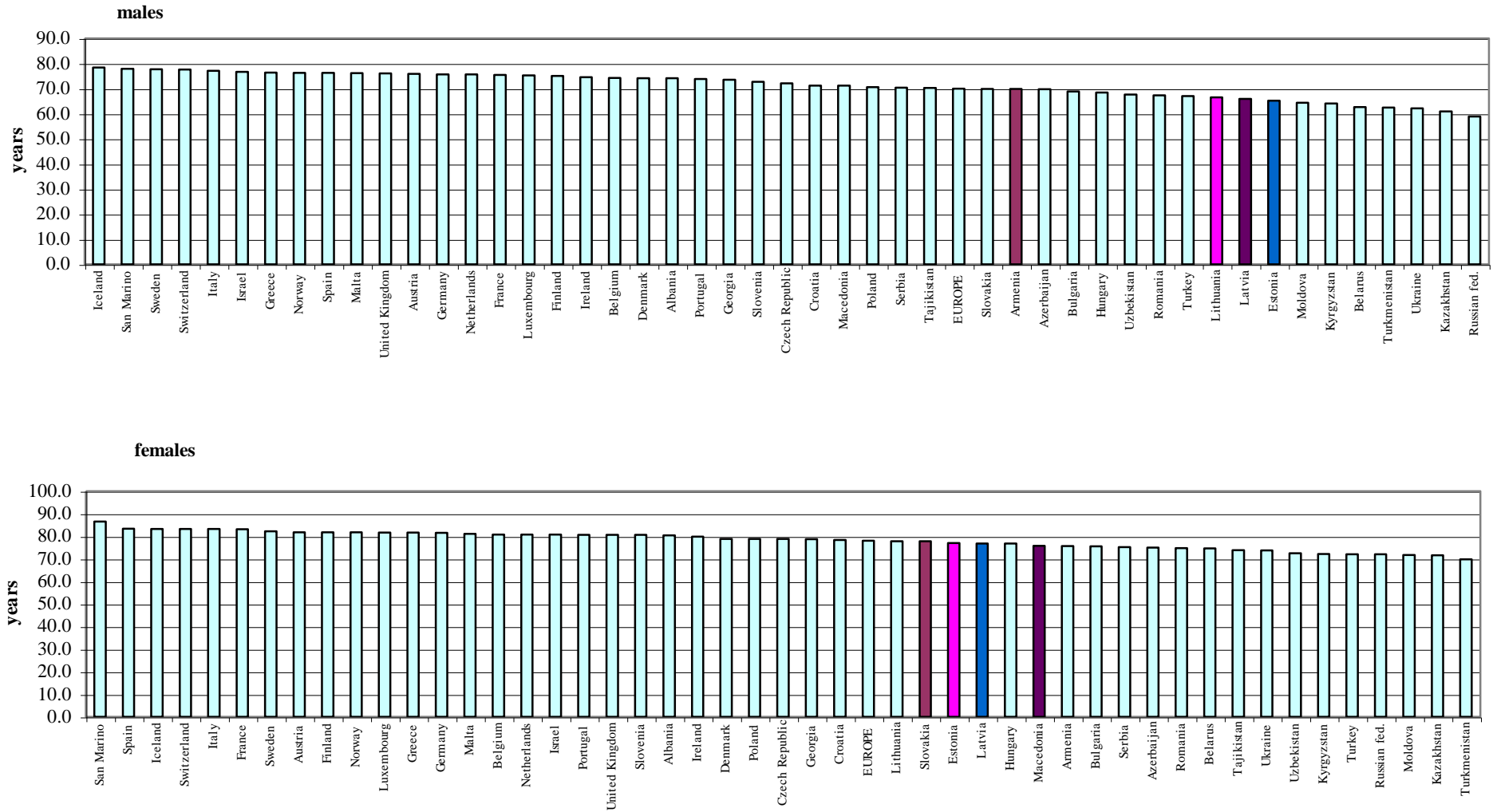
\* Data for Estonia – 01.01.2003



**Nativity, general mortality and natural increase per 1000 population**

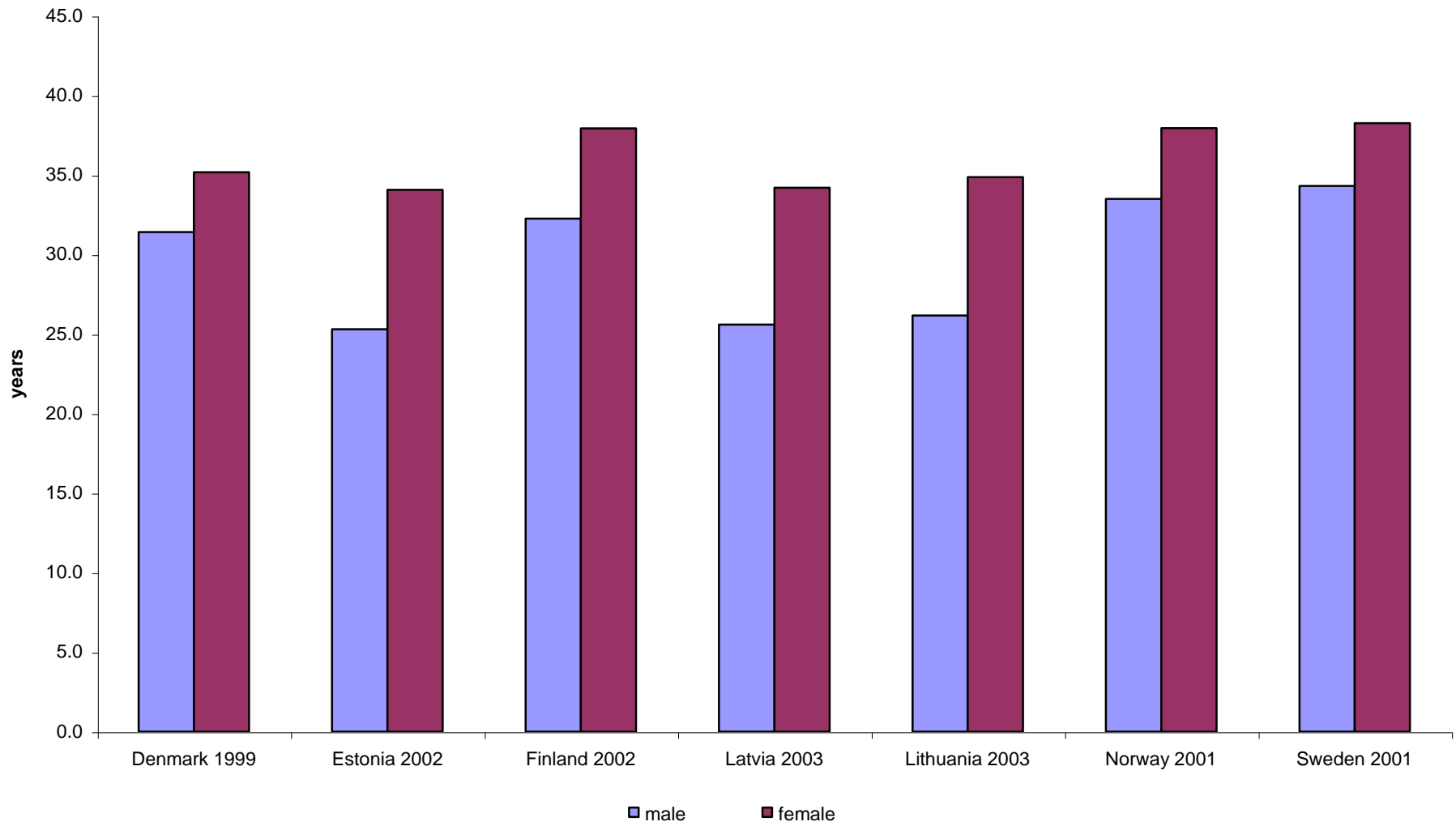
Years	Estonia			Latvia			Lithuania		
	Nativity	General mortality	Natural increase	Nativity	General mortality	Natural increase	Nativity	General mortality	Natural increase
1913	25.1	18.4	6.7	24.2	16.2	8.0	-	-	-
1920	18.4	16.9	1.5	17.0	19.6	-2.6	-	-	-
1925	18.3	16.5	1.8	22.2	14.9	7.3	28.9	16.9	12.0
1935	15.9	15.0	0.9	17.6	14.2	3.4	-	-	-
1940	16.1	17.0	-0.9	19.3	15.7	3.6	23.0	13.0	10.0
1950	18.4	14.4	4.0	17.6	12.9	4.7	23.6	12.0	11.6
1960	16.6	10.5	6.1	16.7	10.0	6.7	22.5	7.8	14.7
1965	14.8	10.6	4.2	13.8	10.1	3.7	18.1	7.9	10.2
1970	16.0	11.2	4.8	14.6	11.3	3.3	17.7	8.9	8.8
1975	15.0	11.6	3.4	14.2	12.2	2.0	15.7	9.5	6.2
1980	14.9	12.4	2.5	14.1	12.8	1.3	15.2	10.5	4.7
1985	15.5	12.6	2.9	15.4	13.2	2.2	16.5	11.1	5.4
1990	14.2	12.4	1.8	14.2	13.1	1.1	15.4	10.8	4.6
1991	12.4	12.6	-0.2	13.1	13.1	0.0	15.2	11.1	4.1
1992	11.8	13.1	-1.3	12.1	13.5	-1.4	14.5	11.2	3.3
1993	10.2	14.2	-4.0	10.4	15.3	-4.9	12.9	12.5	0.4
1994	9.7	15.2	-5.5	9.6	16.6	-7.0	11.6	12.7	-1.1
1995	9.4	14.5	-5.1	8.7	15.7	-7.0	11.4	12.5	-1.1
1996	9.4	13.4	-4.0	8.1	14.0	-5.9	10.8	11.9	-1.1
1997	9.0	13.3	-4.3	7.7	13.8	-6.1	10.6	11.5	-0.9
1998	8.9	14.0	-5.1	7.6	14.2	-6.6	10.4	11.5	-1.1
1999	9.1	13.4	-4.3	8.1	13.7	-5.6	10.3	11.3	-1.0
2000	9.5	13.4	-3.9	8.5	13.6	-5.1	9.8	11.1	-1.3
2001	9.3	13.6	-4.3	8.3	14.0	-5.7	9.1	11.6	-2.5
2002	9.6	13.5	-3.9	8.6	13.9	-5.3	8.6	11.8	-3.2
2003	-	-	-	9.0	13.9	-4.9	8.9	11.9	-3.0

Life expectancy at birth in European countries\*



\* Data for Latvia and Lithuania – 2003, Estonia – 2002, other countries 1997-2002

Life expectancy at the age 45 years



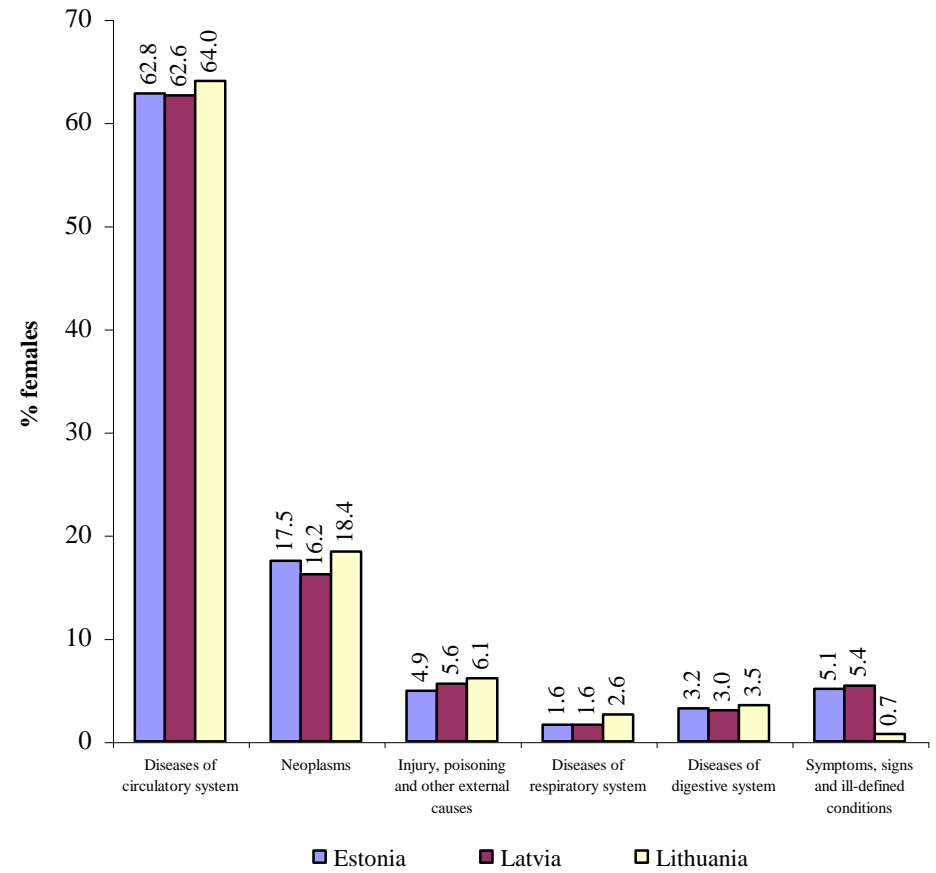
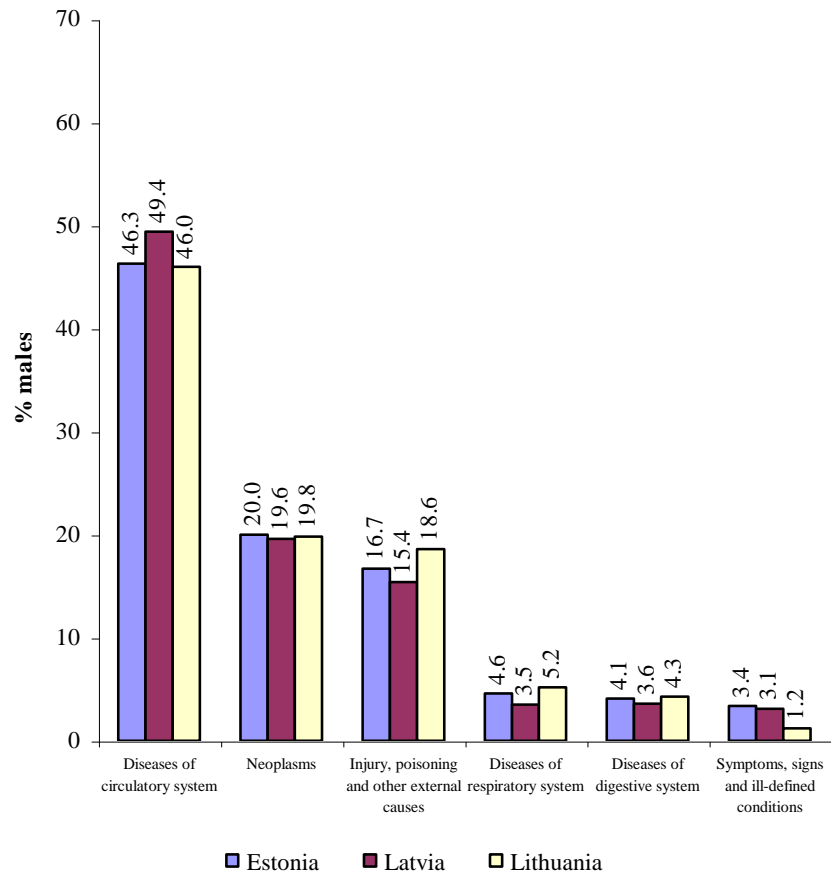
Deaths by cause per 100,000 population in 2003\*\*

Causes of death	Estonia			Latvia			Lithuania		
	Total	Males	Females	Total	Males	Females	Total	Males	Females
Certain infectious and parasitic diseases	9.1	14.5	4.4	14.1	19.4	9.5	13.9	21.8	7.0
Neoplasms	254.2	299.9	215.1	249.6	291.5	213.8	230.0	270.4	194.5
Diseases of the blood and blood forming organs and certain disorders involving the immune mechanisms	0.8	1.3	0.4	1.3	0.8	1.8	0.6	0.5	0.6
Endocrine, nutritional and metabolic diseases	11.3	7.2	14.8	13.1	8.2	17.2	8.7	8.1	9.3
Mental disorders and behavioural disorders	4.5	7.7	1.8	3.6	4.9	2.6	2.0	2.4	1.7
Diseases of the nervous system	16.9	21.4	13.1	16.0	19.7	12.9	10.9	13.8	8.3
Diseases of the eye and adnexa	0.0	0.0	0.0	0.00	0.0	0.0	0.0	0.0	0.0
Diseases of the ear and mastoid process	0.1	0.2	0.1	0.2	0.1	0.2	0.06	0.12	0.0
Diseases of the circulatory system	734.8	692.7	770.8	782.9	733.2	825.3	645.4	622.9	665.2
Diseases of the respiratory system	42.6	68.8	20.2	35.4	52.2	21.0	47.3	70.3	27.2
Diseases of the digestive system	49.5	61.5	39.3	45.7	53.1	39.4	46.6	58.6	36.1
Diseases of the skin and subcutaneous tissue	1.3	1.1	7.2	1.4	1.2	1.6	0.6	0.4	0.8
Diseases of the musculo-skeletal and connective tissue	5.7	3.8	7.2	4.0	2.5	5.2	3.0	1.7	4.1
Diseases of the genito-urinary system	10.5	8.0	12.7	14.8	13.1	16.3	8.4	8.4	8.5
Pregnancy, childbirth and puerperium*	-	-	0.1	-	-	0.2	-	-	0.1
Certain conditions originating in perinatal period	2.2	3.4	1.2	3.5	4.9	2.3	2.3	2.9	1.8
Congenital malformations, deformations and chromosomal abnormalities	3.1	4.6	1.8	4.6	5.8	3.5	3.5	4.0	3.0
Symptoms, signs and abnormal clinical and laboratory findings, not elsewhere classified	56.8	50.1	62.4	59.7	45.7	71.7	11.7	16.6	7.4
Injury, poisoning and certain other consequences of external causes	147.9	250.1	60.5	145.1	228.1	74.2	151.7	252.5	63.4
<b>TOTAL</b>	<b>1351.0</b>	<b>1496.0</b>	<b>1227.0</b>	<b>1394.9</b>	<b>1484.4</b>	<b>1318.6</b>	<b>1186.7</b>	<b>1355.2</b>	<b>1039.0</b>

\* per 100,000 females

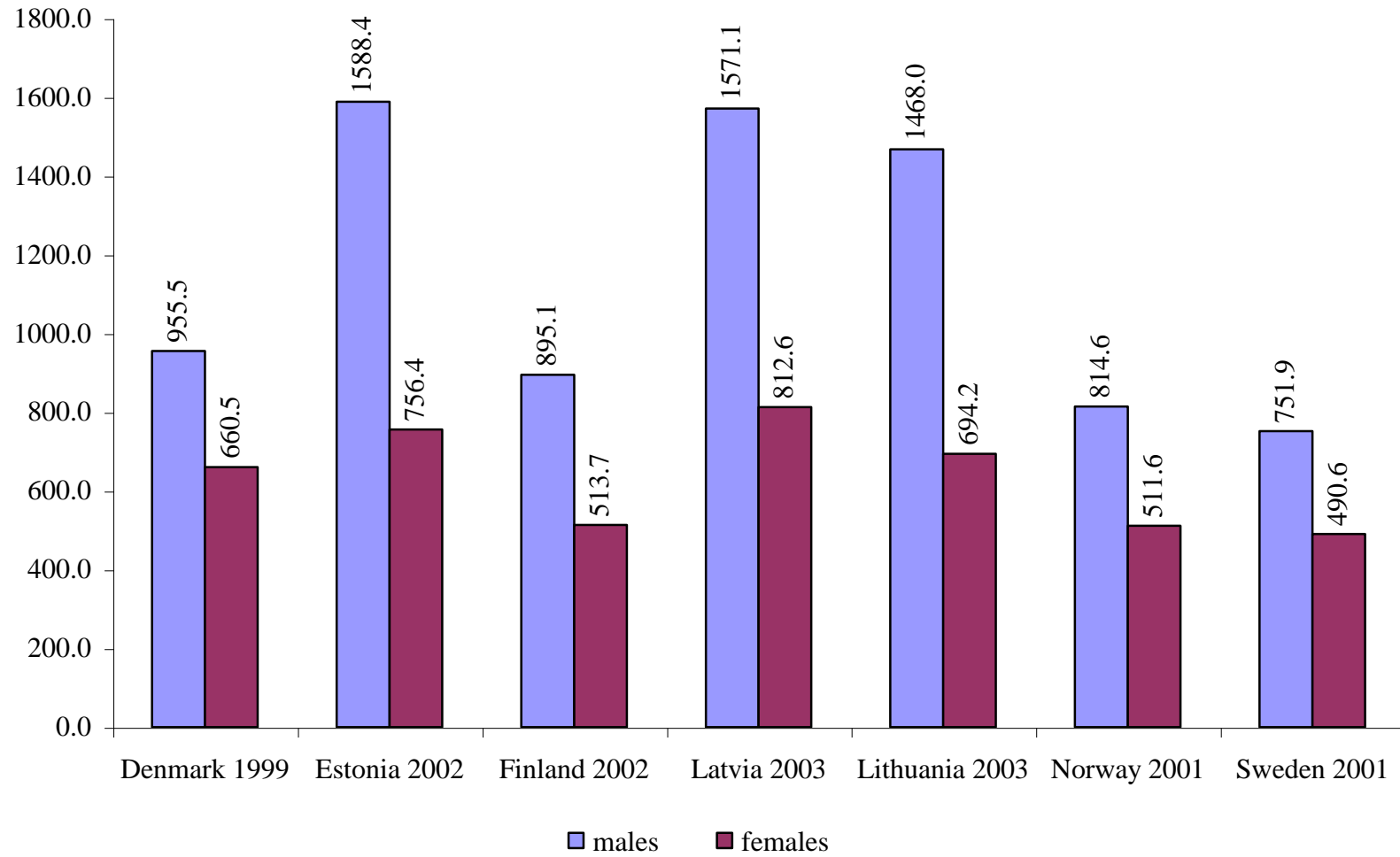
\*\*Data for Estonia - 2002

Main causes of death in 2003\*



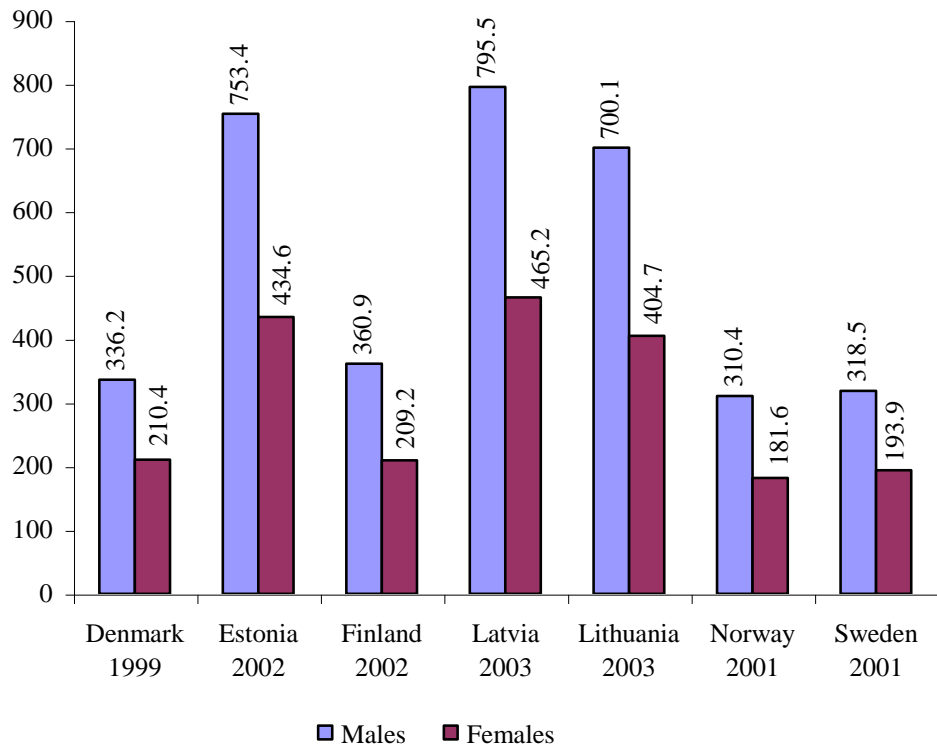
\*Data for Estonia - 2002

**Age-standardized death rates**  
(per 100,000 European standard population)

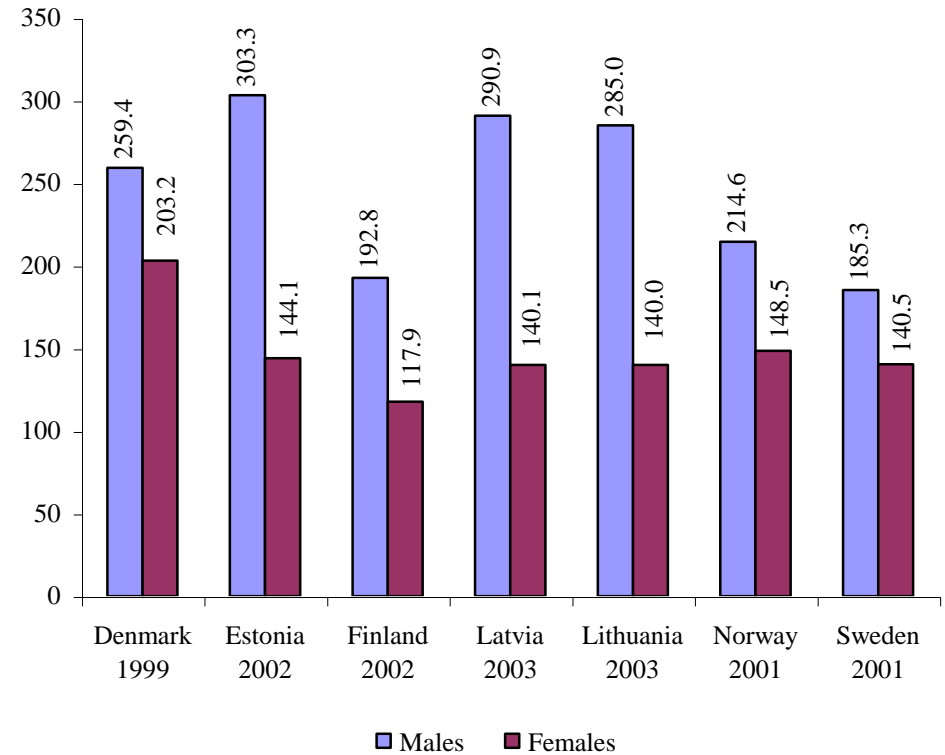


**Age-standardized death rates**  
(per 100,000 European standard population)

**by diseases of the circulatory system**

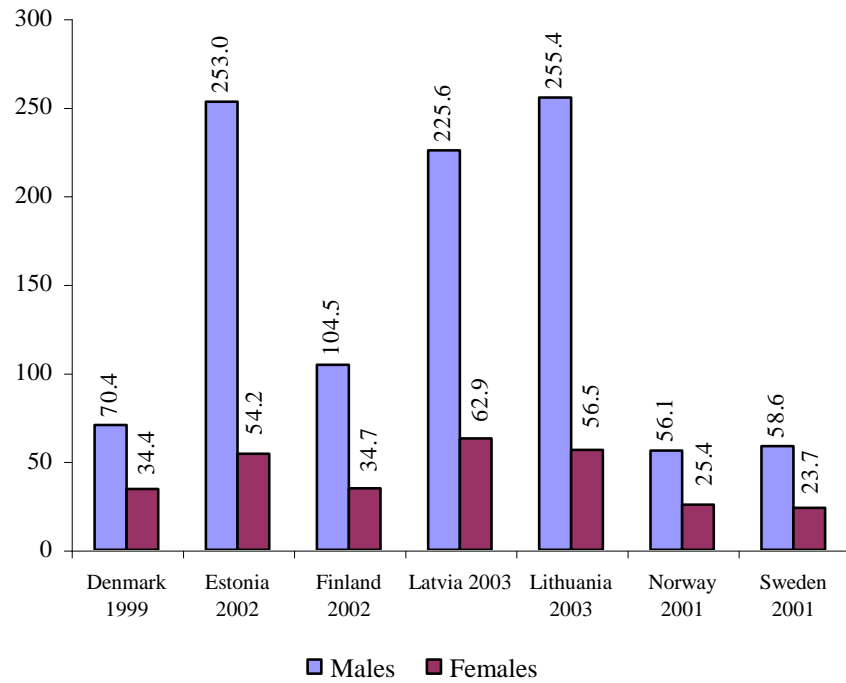


**by malignant neoplasms**

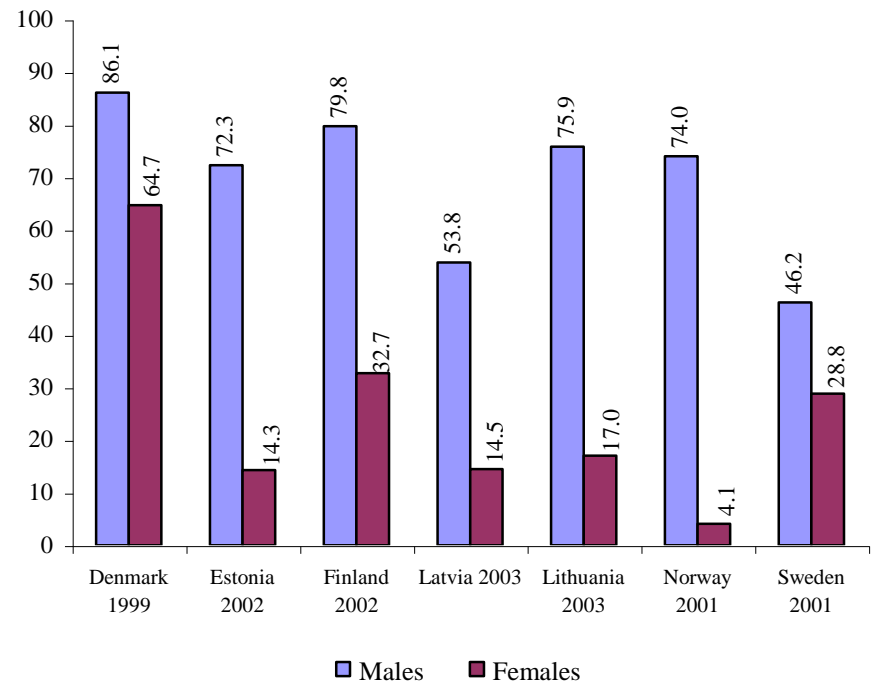


**Age-standardized death rates**  
(per 100,000 European standard population)

**by accidents, injuries and poisoning**



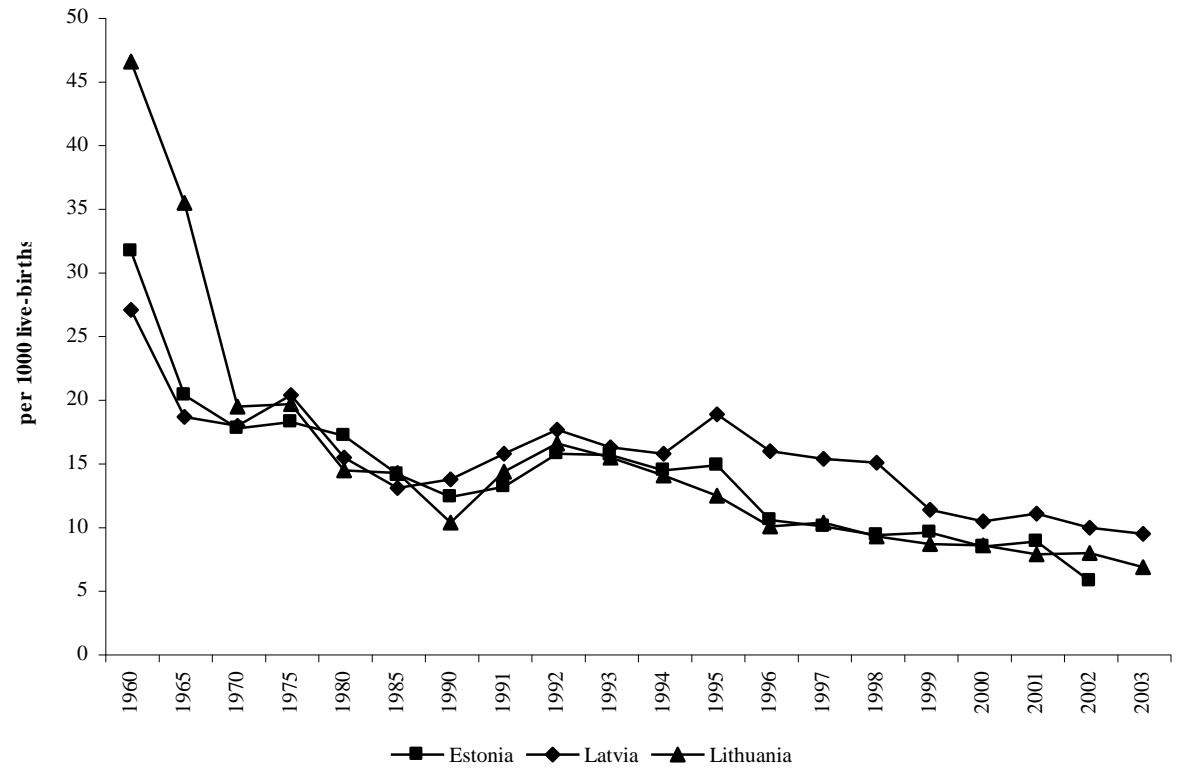
**by diseases of the respiratory system**



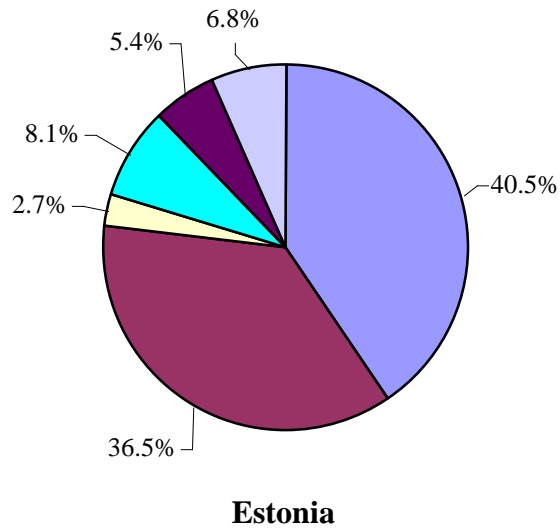


**Infant mortality**  
(per 1000 live-births)

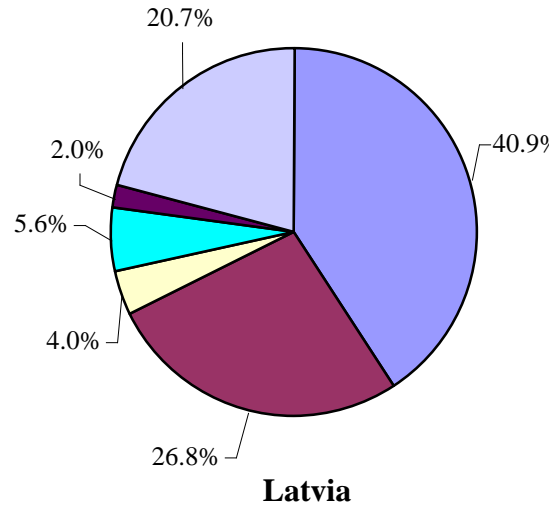
Years	Estonia	Latvia	Lithuania
1925	-	107.2	179.0
1935	-	78.9	-
1940	84.9	74.9	98.5
1960	31.6	27.0	46.5
1965	20.3	18.6	35.4
1970	17.7	17.9	19.4
1975	18.2	20.3	19.6
1980	17.1	15.4	14.4
1985	14.1	13.0	14.2
1990	12.3	13.7	10.3
1991	13.1	15.7	14.3
1992	15.7	17.6	16.5
1993	15.6	16.2	15.4
1994	14.4	15.7	14.0
1995	14.8	18.8	12.4
1996	10.5	15.9	10.0
1997	10.0	15.3	10.3
1998	9.3	15.0	9.2
1999	9.5	11.3	8.6
2000	8.4	10.4	8.5
2001	8.8	11.0	7.8
2002	5.7	9.9	7.9
2003	-	9.4	6.8



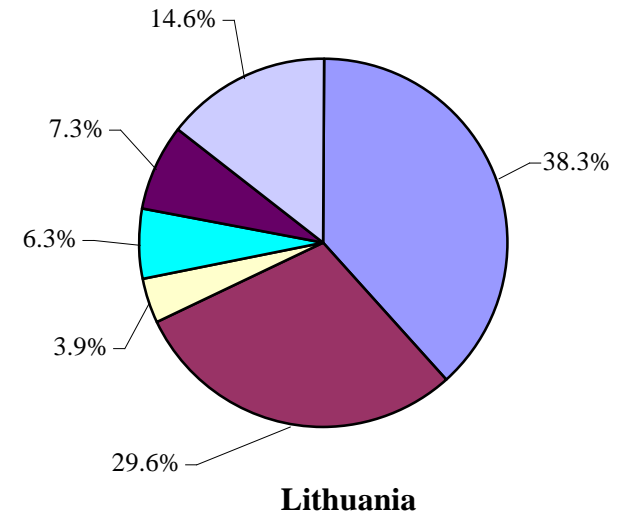
Structure of infant mortality (%) in 2003\*



- Perinatal conditions
- Congenital anomalies
- Infectious and parasitic diseases
- Injuries and poisoning
- Diseases of the respiratory system
- Other causes



- Perinatal conditions
- Congenital anomalies
- Infectious and parasitic diseases
- Injuries and poisoning
- Diseases of the respiratory system
- Other causes



- Perinatal conditions
- Congenital anomalies
- Infectious and parasitic diseases
- Injuries and poisoning
- Diseases of the respiratory system
- Other causes

\*Data for Estonia - 2002

**Infant mortality by causes**  
per 10,000 live births in 2003\*

	Estonia		Latvia		Lithuania	
	Rate	%	Rate	%	Rate	%
Certain conditions originating in the perinatal period	23.1	40.5	38.6	40.9	2.6	38.3
Congenital anomalies	20.8	36.5	25.3	26.8	2.0	29.6
Diseases of the respiratory system	3.1	5.4	1.9	2.0	0.5	7.3
Infectious and parasitic diseases	1.5	2.7	3.8	4.0	0.3	3.9
Accidents, injury and poisoning	4.6	8.1	5.2	5.6	0.4	6.3
Diseases of the nervous system and sense organs	1.5	2.7	1.9	2.0	0.1	1.9
Diseases of the digestive system	0.0	0.0	0.0	0.0	0.1	1.0
Other causes	2.3	4.1	17.6	18.7	0.8	11.7
<b>TOTAL</b>	<b>56.9</b>	<b>100.0</b>	<b>94.4</b>	<b>100.0</b>	<b>6.7</b>	<b>100.0</b>

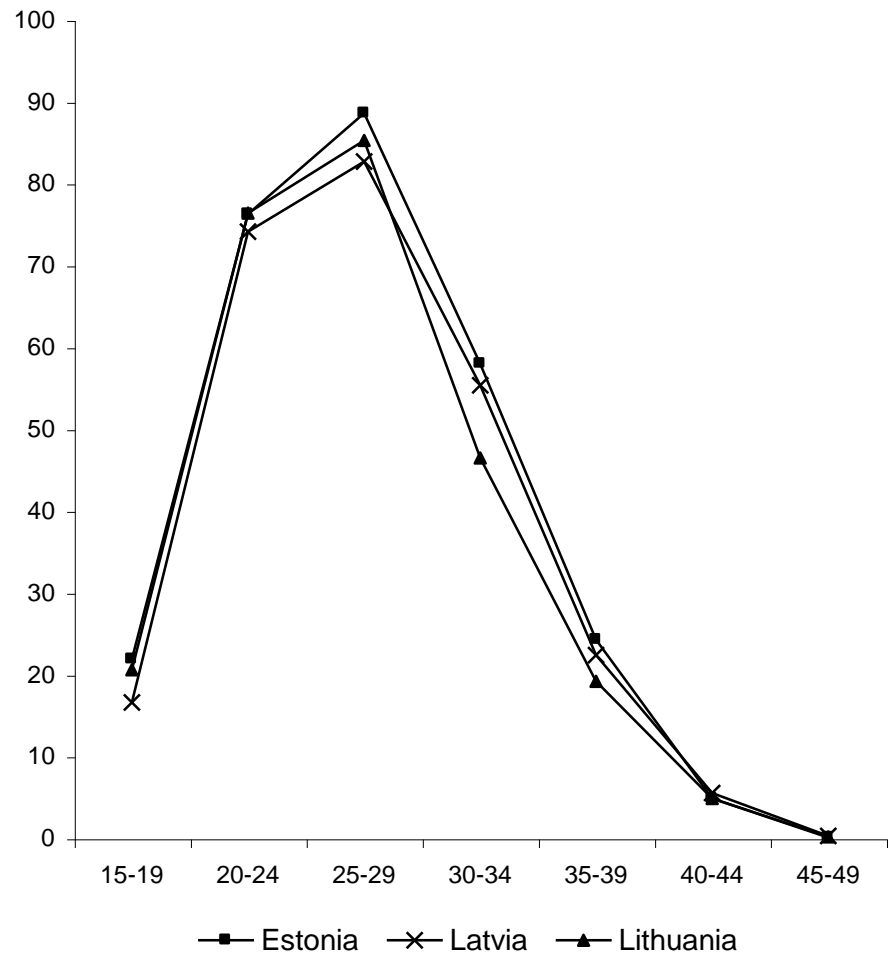
**Perinatal, neonatal and maternal mortality**  
in 2003\*

	Estonia	Latvia	Lithuania
Perinatal mortality per 1000 births	8.1	10.4	8.0
Foetal death rate per 1000 births	5.7	6.2	5.5
Neonatal mortality per 1000 live births	3.7	5.7	3.7
Early neonatal mortality per 1000 live births	2.4	4.2	2.6
Maternal mortality per 100000 live births	7.7	14.3	3.3
Standard perinatal mortality	6.4	7.7	5.5
Standard foetal death rate	4.8	4.5	4.3

\*Data for Estonia - 2002

**Birth rates by age of mother in 2003\***  
per 1000 women

	<b>Estonia</b>	<b>Latvia</b>	<b>Lithuania</b>
Women 15-49 years of age	38.0	35.5	34.4
Of them by age:			
15-19	21.9	16.6	20.6
20-24	76.3	74.2	76.4
25-29	88.6	82.7	85.3
30-34	58.0	55.4	46.5
35-39	24.3	22.4	19.2
40-44	4.9	5.6	4.9
45-49	0.1	0.3	0.2
<b>Total fertility rate</b>	1.37	1.29	1.26

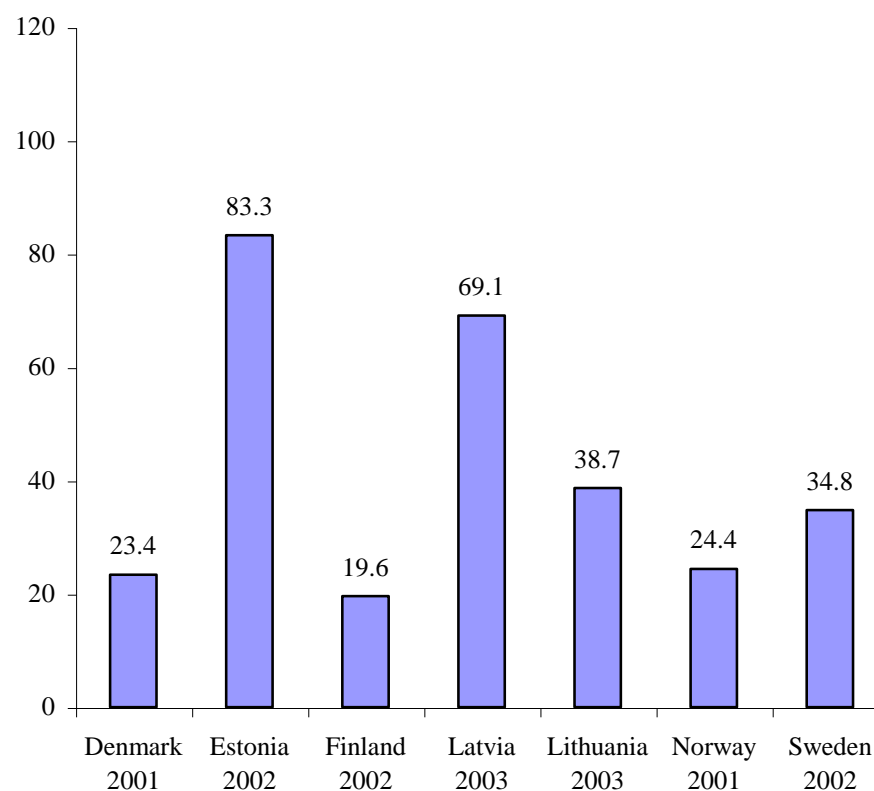


\*Data for Estonia - 2002

**Abortions in 2003\***

	<b>Estonia</b>	<b>Latvia</b>	<b>Lithuania</b>
<b>All abortions</b>			
Total number	13158	18973	17851
Per 1000 women aged 15-49 years	38.4	32.0	20.1
Per 100 live births	101.1	90.4	60.0
<b>Induced abortions</b>			
Total number	10839	14508	11513
Per 1000 women aged 15-49 years	31.6	24.5	13.0
Per 100 live births	83.3	69.1	38.7
<b>Percentage</b>			
Spontaneous abortions	9.5	18.6	26.8
Legal abortions	80.4	74.6	64.1
Therapeutic abortions	2.0	1.8	0.4
Other abortions	8.1	5.0	8.7

**Induced abortions per 100 live births**

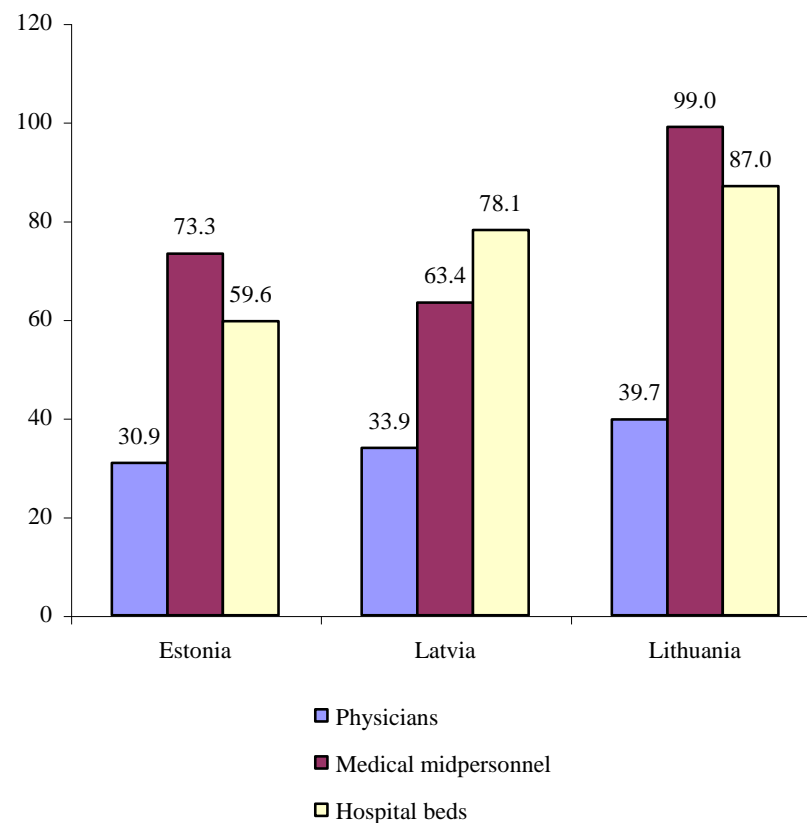


\*Data for Estonia - 2002

Health facilities in 2003

	Estonia*	Latvia	Lithuania
<b>Hospitals</b>	50	131	193
Hospital beds:			
Thousand	8.1	18.1	30.0
Per 10,000 population	59.6	78.1	87.0
<b>Physicians:</b>			
Thousand	4.2	6.6	13.7
Per 10,000 population	30.9	33.9	39.7
<b>Dentists:</b>			
Thousand	1.1	1.3	2.4
Per 10,000 population	7.9	5.5	6.9
<b>Medical midpersonnel:</b>			
Thousand	9.9	14.7	34.1
Per 10,000 population	73.3	63.4	99.0
<b>Hospital admission:</b>			
Thousand	259.8	486.3	811.3
Per 100 population	19.1	20.9	234.9
<b>Physicians visits:</b>			
Million	8.0	11.0	22.9
Per 1inhabitant	5.9	4.7	6.6

Number of physicians, medical midpersonnel and hospital beds per 10,000 population in 2003\*



\* Data for Estonia - 2002

Physicians by speciality at the end of 2003\*\*

	Estonia		Latvia		Lithuania	
	Number	Per 10,000 population	Number	Per 10,000 population	Number	Per 10,000 population
TOTAL *	4190	30.9	7883	33.9	13682	39.7
Of them:						
Family doctors and general practitioners	701	5.2	1050	4.5	1500	4.4
Internal medicine	509	3.8	826	3.5	2414	7.0
Surgery (include orthopaedics)	388	2.9	623	2.7	1138	3.3
Paediatrics	311	2.3	329	1.4	1291	3.7
Gynaecology (include obstetrics)	287	2.1	446	1.9	771	2.2
Oncology	28	0.2	79	0.3	131	0.4
Otolaryngology	96	0.7	160	0.7	282	0.8
Ophthalmology	114	0.8	198	0.9	370	1.1
Anaesthesiology	256	1.9	356	1.5	565	1.6
Neurology	145	1.1	235	1.0	500	1.5
Psychiatry	174	1.3	225	0.9	523	1.5
Narcology	-	-	75	0.3	47	0.1
Tuberculosis	-	-	129	0.6	127	0.4
Infectology	26	0.2	49	0.2	71	0.2
Epidemiology	-	-	53	0.2	108	0.3
Dermatology & venerology	77	0.6	108	0.5	182	0.5
Radiology	177	1.3	279	1.2	455	1.3
Pathology	31	0.2	39	0.2	65	0.2
Forensic medicine	-	-	44	0.2	54	0.2
Laboratory	120	0.9	215	0.9	105	0.3
Hygiene	-	-	38	0.2	159	0.5
Others	750	5.5	2327	10.0	2824	8.2
* Number of dentists is not included						

\*\*Data for Estonia - 2002

Hospital beds by speciality at the end of 2003\*

	Estonia			Latvia**			Lithuania		
	Number of beds	Per 10000 population	%	Number of beds	Per 10000 population	%	Number of beds	Per 10000 population	%
<b>TOTAL</b>	8088	59.6	100.0	18169	78.1	100	29990	87.0	100
Of them:									
Internal medicine	1634	12.0	20.2	3198	13.8	17.6	5588	16.2	18.6
Rehabilitation	381	2.8	4.7	736	3.2	4.1	1318	3.8	4.4
Surgery (include orthopaedics)	1625	12.0	20.1	3524	15.2	19.4	5422	15.7	18.1
Oncology (include radiology)	122	0.9	1.5	894	3.8	4.9	1042	3.0	3.5
Otolaryngology	99	0.7	1.2	190	0.8	1.0	432	1.3	1.4
Ophthalmology	49	0.4	0.6	188	0.8	1.0	333	1.0	1.1
Obstetrics	340	2.5	4.2	648	2.8	3.6	1119	3.2	3.7
Gynaecology	260	1.9	3.2	639	2.7	3.5	977	2.8	3.3
Neurology	367	2.7	4.5	1058	4.5	5.8	1961	5.7	6.5
Dermatology & venerology	69	0.5	0.9	120	0.5	0.7	163	0.5	0.5
Infectious	190	1.4	2.3	745	3.2	4.1	706	2.0	2.4
Tuberculosis	229	1.7	2.8	1107	4.8	6.1	1702	4.9	5.7
Paediatrics	447	3.3	5.5	796	3.4	4.4	1576	4.6	5.3
Psychiatry	854	6.3	10.6	3203	13.8	17.6	3468	10.1	11.6
Narcology	-	-	-	428	1.8	2.4	254	0.7	0.8
General & nursing	-	-	-	406	1.7	2.2	3167	9.2	10.6

\* Data from Estonia - 2002

\*\* Without short-term social care beds



**Selected notifiable diseases**  
per 100,000 population in 2003

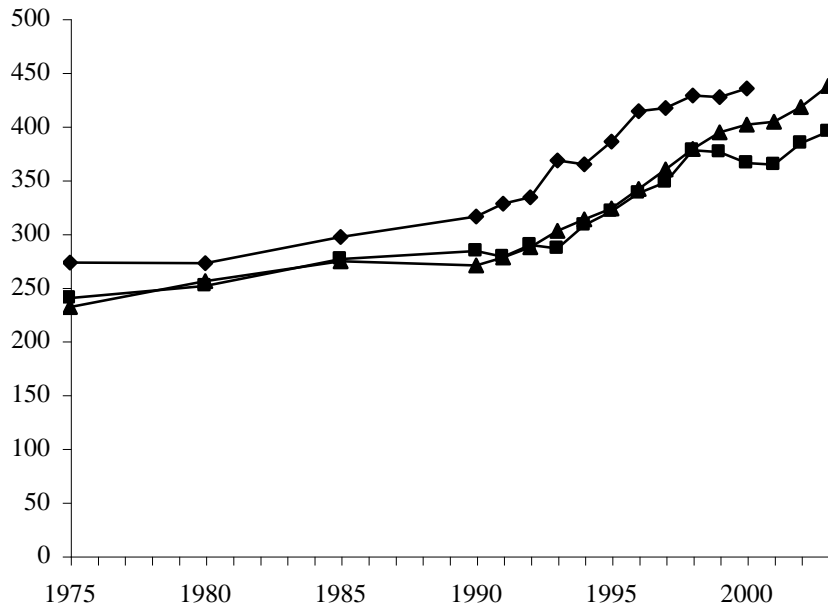
	<b>Estonia*</b>	<b>Latvia</b>	<b>Lithuania</b>
Typhoid fever and paratyphoid	0.2	-	0.09
Salmonella infections	24.8	34.4	33.6
Bacillary dysentery	24.7	59.7	22.6
Other intestinal infections	338.7	263.0	253.2
Diphtheria	-	1.1	-
Whooping cough	15.8	4.3	0.1
Meningococcal infection	0.7	1.0	2.1
Measles	-	-	0.03
Tick-borne viral encephalitis	6.6	15.7	22.1
Viral hepatitis	49.8	59.3	8.6
A	1.7	1.1	0.4
B	18.0	14.5	5.1
Acute upper respiratory infections	16310.5	16014.6	14734.7
Influenza	205.8	1461.9	2661.3
<b>Malignant neoplasms</b>			
Incidence	434.8**	394.6	437.2
Prevalence	2396.6**	2241.8	1844.0
<b>Tuberculosis</b>			
Incidence (excl. relapses)	38.6	63.7	65.1
Prevalence	37.9	90.6	256.2
Syphilis	21.1	33.7	13.2
Gonorrhoea	39.6	20.7	14.6
AIDS	0.3	2.5	0.2
HIV carrier	66.2	17.3	3.2

\* Data for Estonia - 2002

\*\*Data for year 2000

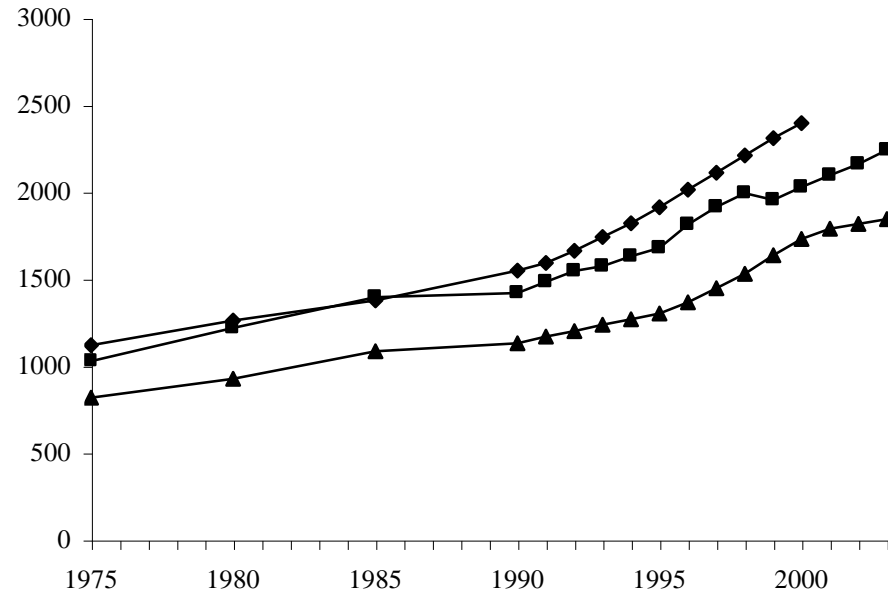
Malignant neoplasms  
(per 100,000 population)

incidence



◆ Estonia ■ Latvia ▲ Lithuania

prevalence

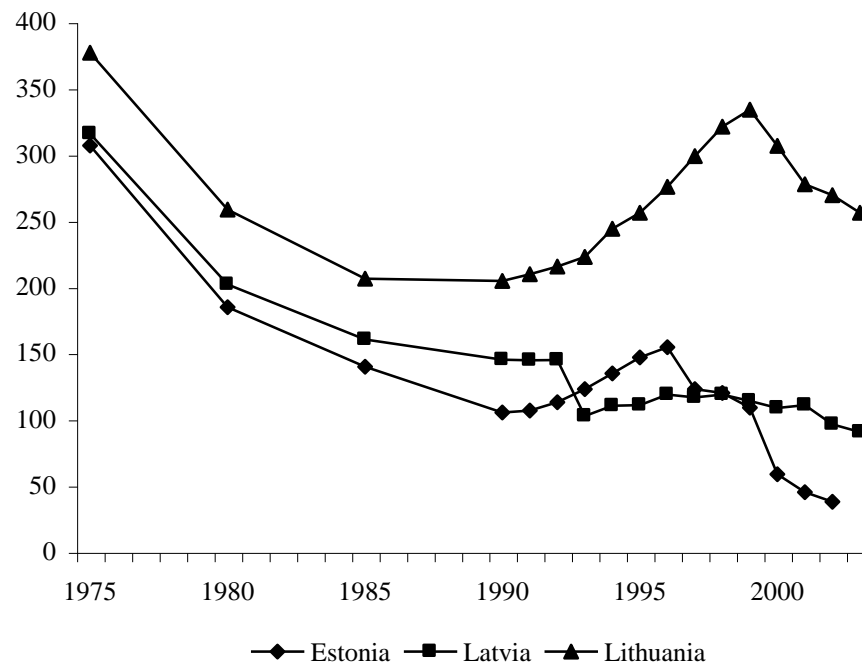
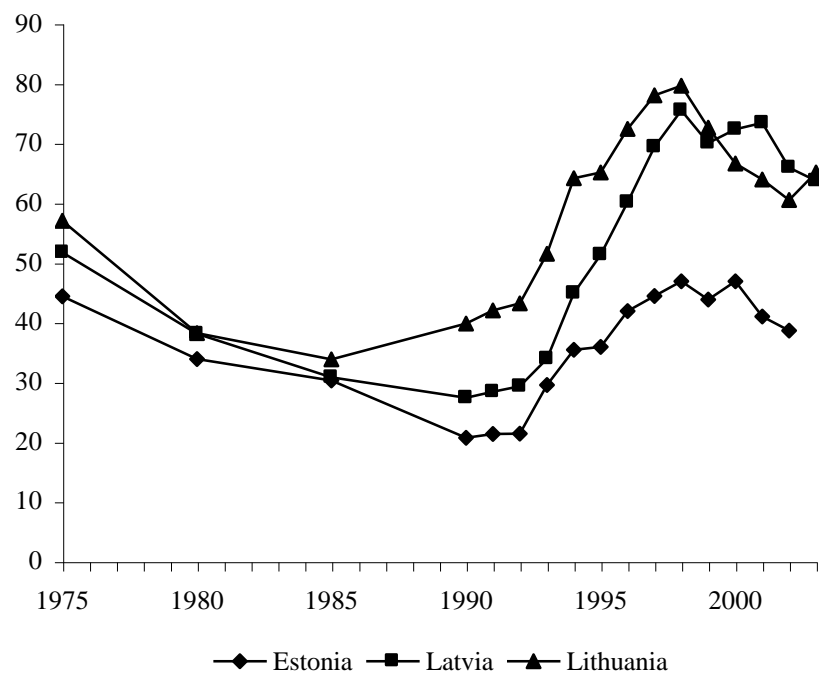


◆ Estonia ■ Latvia ▲ Lithuania

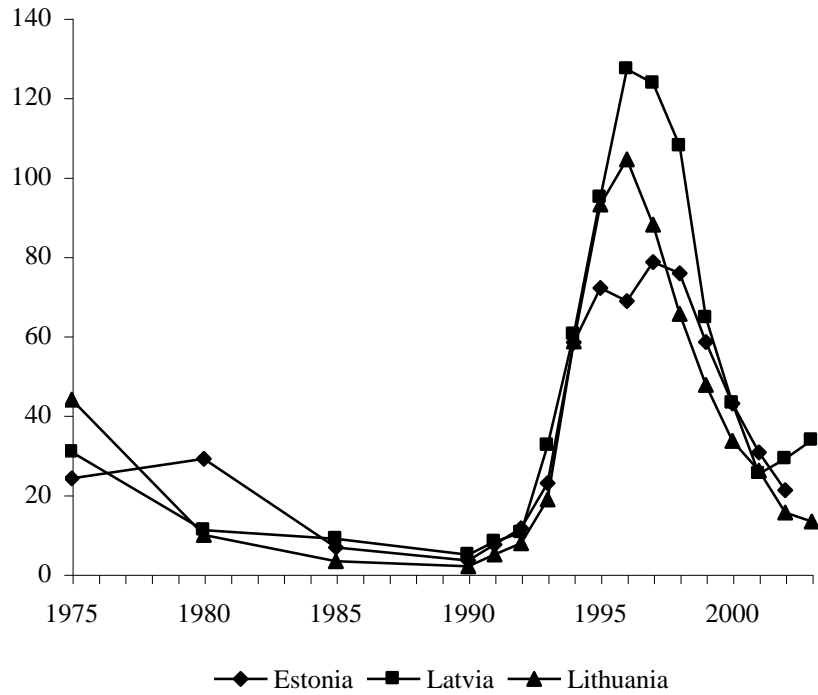
**Tuberculosis**  
(per 100,000 population)

**incidence (excl. relapses)**

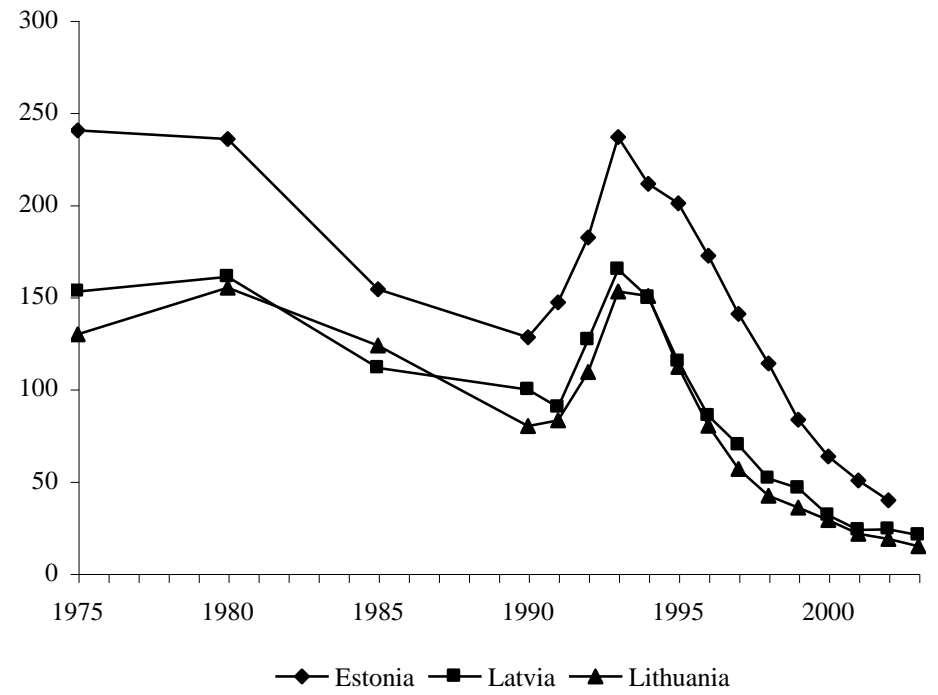
**prevalence**



**Incidence of syphilis**  
(per 100000 population)



**Incidence of gonorrhoea**  
(per 100000 population)



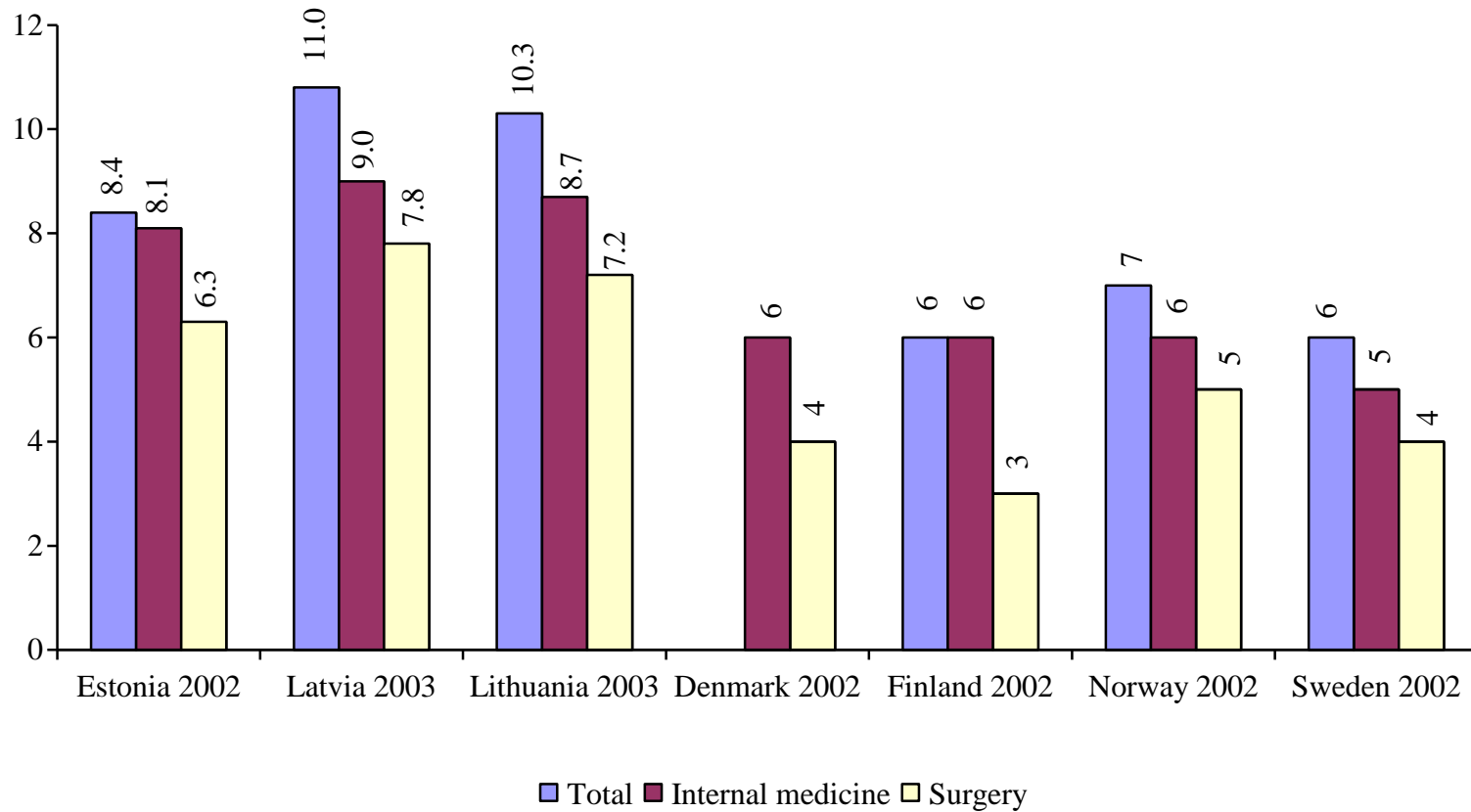
Hospital beds utilization by speciality in 2003\*

	Estonia					Latvia**					Lithuania				
	Admission per 1000 pop.	Bed occupancy		Average length of stay	Bed turnover	Admission per 1000 pop.	Bed occupancy		Average length of stay	Bed turnover	Admission per 1000 pop.	Bed occupancy		Average length of stay	Bed turnover
		Days	%				Days	%				Days	%		
<b>TOTAL</b>	191.2	247.0	67.7	8.4	29.5	209.1	288.2	79.0	10.8	26.8	234.9	275.7	75.5	10.3	26.6
Internal medicine	38.2	246.0	67.4	8.1	29.6	43.1	290.3	79.5	9.0	32.2	50.8	287.6	78.8	8.7	33.1
Rehabilitation	4.4	211.6	58.0	8.4	15.4	4.5	267.2	73.2	19.0	14.0	3.9	271.8	74.5	26.0	10.4
Surgery (include orthopaedics)	50.2	282.1	77.3	6.3	24.8	53.0	277.2	76.0	7.8	35.6	55.2	260.1	71.3	7.2	36.0
Oncology (include radiology)	3.4	297.9	81.6	8.0	4.3	9.2	250.4	68.6	10.4	24.1	8.2	277.3	76.0	10.4	26.7
Otolaryngology	6.7	235.9	64.6	2.8	85.0	3.8	263.2	72.1	5.6	46.9	6.5	221.7	60.7	4.5	49.7
Ophthalmology	3.6	125.3	34.3	2.3	54.8	2.9	213.8	58.6	5.9	36.3	5.8	277.6	76.1	4.7	59.3
Obstetrics	13.7	183.7	50.3	3.7	53.5	11.3	232.8	63.8	5.8	40.5	13.7	223.5	61.2	5.5	40.7
Gynaecology	14.2	169.7	46.5	2.5	69.3	16.0	249.1	68.2	4.3	58.6	15.8	235.5	64.5	4.3	55.2
Neurology	9.6	267.1	73.2	8.2	32.8	14.4	316.7	86.8	10.0	31.8	18.1	293.0	80.3	9.4	31.1
Dermatology & venerology	1.4	246.2	67.5	11.1	22.2	1.2	308.4	84.5	13.6	22.6	1.2	280.9	77.0	11.2	25.1
Infectious	5.6	212.6	58.2	5.8	36.8	10.5	216.4	59.3	6.6	32.9	8.0	254.6	69.8	6.4	39.6
Tuberculosis	0.9	299.7	82.1	58.1	5.0	3.0	319.3	87.5	50.8	6.3	2.7	282.8	77.5	55.7	5.1
Paediatrics	12.2	196.8	53.9	5.5	34.6	11.6	261.1	71.5	7.6	34.3	17.2	247.7	67.9	6.5	38.2
Psychiatry	10.4	260.1	71.3	19.0	13.5	8.0	357.3	97.9	61.4	5.8	8.4	307.8	84.3	35.7	8.6
Narcology	-	-	-	-	-	6.2	214.1	58.7	6.4	33.5	1.7	288.5	79.0	11.9	24.1
General & nursing	-	-	-	-	-	4.8	231.8	63.5	8.5	27.4	6.3	302.1	82.8	43.8	6.9

\*Data for Estonia - 2002

\*\* Without short-term social care beds

Average length of stay (days)



## Discharges by groups of diseases in 2003

	Estonia***				Latvia*				Lithuania			
	children		adults		children		adults		children		adults	
	discharges per 1000 pop.	average length of stay	discharges per 1000 pop.	average length of stay	discharges per 1000 pop.	average length of stay	discharges per 1000 pop.	average length of stay	discharges per 1000 pop.	average length of stay	discharges per 1000 pop.	average length of stay
Certain infectious and parasitic diseases	17.5	4.3	4.9	19.0	17.7	8.7	6.6	28.8	19.6	6.4	5.9	29.1
Neoplasms	4.9	4.0	18.6	7.9	2.8	7.8	19.8	9.7	3.2	7.5	19.6	10.2
Diseases of the blood and blood forming organs and certain disorders involving the immune mechanisms	1.8	4.1	1.0	9.2	0.8	8.2	0.8	10.3	1.2	6.3	0.8	8.4
Endocrine, nutritional and metabolic diseases	1.9	5.2	3.8	9.0	2.1	6.6	4.3	9.0	2.1	7.1	4.5	9.9
Mental disorders and behavioural disorders	6.5	9.6	13.0	17.1	8.1	25.1	17.6	30.7	3.7	14.0	13.3	29.8
Diseases of the nervous system	8.4	7.9	5.0	9.5	8.6**	8.5**	10.8**	8.5**	5.9	7.9	12.7	10.3
Diseases of the eye and adnexa	1.1	1.9	2.7	2.3	-	-	-	-	2.8	6.3	5.4	5.0
Diseases of the ear and mastoid process	5.7	4.7	1.3	4.6	-	-	-	-	3.7	6.5	1.6	7.9
Diseases of the circulatory system	1.9	4.5	37.7	11.0	1.7	6.5	38.1	10.0	2.0	5.3	52.8	12.7
Diseases of the respiratory system	47.9	4.8	12.2	7.6	56.6	7.5	12.6	9.5	64.0	6.1	16.3	9.6
Diseases of the digestive system	12.7	3.8	18.5	5.9	19.8	5.1	18.4	7.1	22.9	4.6	19.4	7.6
Diseases of the skin and subcutaneous tissue	4.3	4.9	3.6	9.2	5.4	6.3	3.4	8.9	5.4	5.0	4.1	9.3
Diseases of the musculo-skeletal and connective tissue	3.7	5.9	15.6	8.6	5.3	13.1	13.8	11.1	3.9	8.5	13.1	11.2
Diseases of the genitourinary system	7.0	5.2	14.6	4.7	7.5	6.4	15.1	5.9	6.4	5.9	18.2	5.9
Pregnancy, childbirth and puerperium	0.1	3.3	22.7	3.3	2.4	4.8	23.3	4.9	0.04	7.0	23.9	4.8
Certain conditions originating in perinatal period	11.2	7.7	-	-	15.8	7.3	-	-	16.7	7.5	-	-
Congenital malformations, deformations and chromosomal abnormalities	7.4	6.4	0.6	6.3	6.4	8.3	0.5	6.9	7.5	7.0	0.4	8.7
Symptoms, signs and abnormal clinical and laboratory findings, not elsewhere classified	4.2	3.1	1.1	4.6	0.6	8.1	0.1	5.4	6.1	29.9	1.3	9.7
Injury, poisoning and certain other consequences of external causes	12.3	4.4	12.8	9.9	21.1	5.3	22.1	8.6	19.5	4.7	21.9	8.8
<b>TOTAL</b>	163.5	5.2	190.8	8.5	183.0	8.0	207.4	11.0	196.7	6.9	235.0	10.9

\* Without short term social care beds

\*\* Diseases of the nervous system and sense organs

\*\*\* Data for Estonia - 2002

**Surgical operations in hospitals in 2003**

	Estonia***			Latvia			Lithuania		
	Number	Per 100,000 population	%	Number	Per 100,000 population	%	Number	Per 100,000 population	%
TOTAL	87428	6434.9	100.0	149207	6416.6	100	269278	7795.7	100.0
On the nervous system	2676	197.0	3.1	2871	123.5	1.9	6841	198.0	2.5
On the endocrine system	523	38.5	0.6	1300	55.9	0.9	1798	52.1	0.7
On the eye	3339	245.8	3.8	5167	222.2	3.5	15592	451.4	5.8
On the ear, throat and nose	10645	783.5	12.2	7108	305.7	4.8	22265	644.6	8.3
On the respiratory system	995	73.2	1.1	1927	82.9	1.3	3222	93.3	1.2
On the heart	1248	91.9	1.4	6836	294.0	4.6	7377	213.6	2.7
On the vessels	486	35.8	0.6	3932	169.1	2.6	14580	422.1	5.4
On the digestive system	14271	1050.4	16.3	20325	874.1	13.6	41447	1199.9	15.4
On the kidneys and ureter	1151	84.7	1.3	1639	70.5	1.1	6665	193.0	2.5
On the prostate*	1126	179.8	1.3	1809	168.0	1.2	7228	448.1	2.7
On the female genital organs**	10729	1465.0	12.3	22231	1761.5	14.9	37234	2022.3	13.8
Obstetrical operations**	12070	1648.1	13.8	23601	1870.1	15.8	26637	1446.7	9.9
On the musculo-skeletal system	13218	972.9	15.1	26401	1135.4	17.7	40261	1165.6	15.0
On the breast	1058	77.9	1.2	1798	77.3	1.2	3079	89.1	1.1
On the skin and subcutaneous tissue	6060	446.0	6.9	13201	567.7	8.8	24797	717.9	9.2
Other procedures	7833	576.5	9.0	9061	389.7	6.1	10255	296.9	3.8

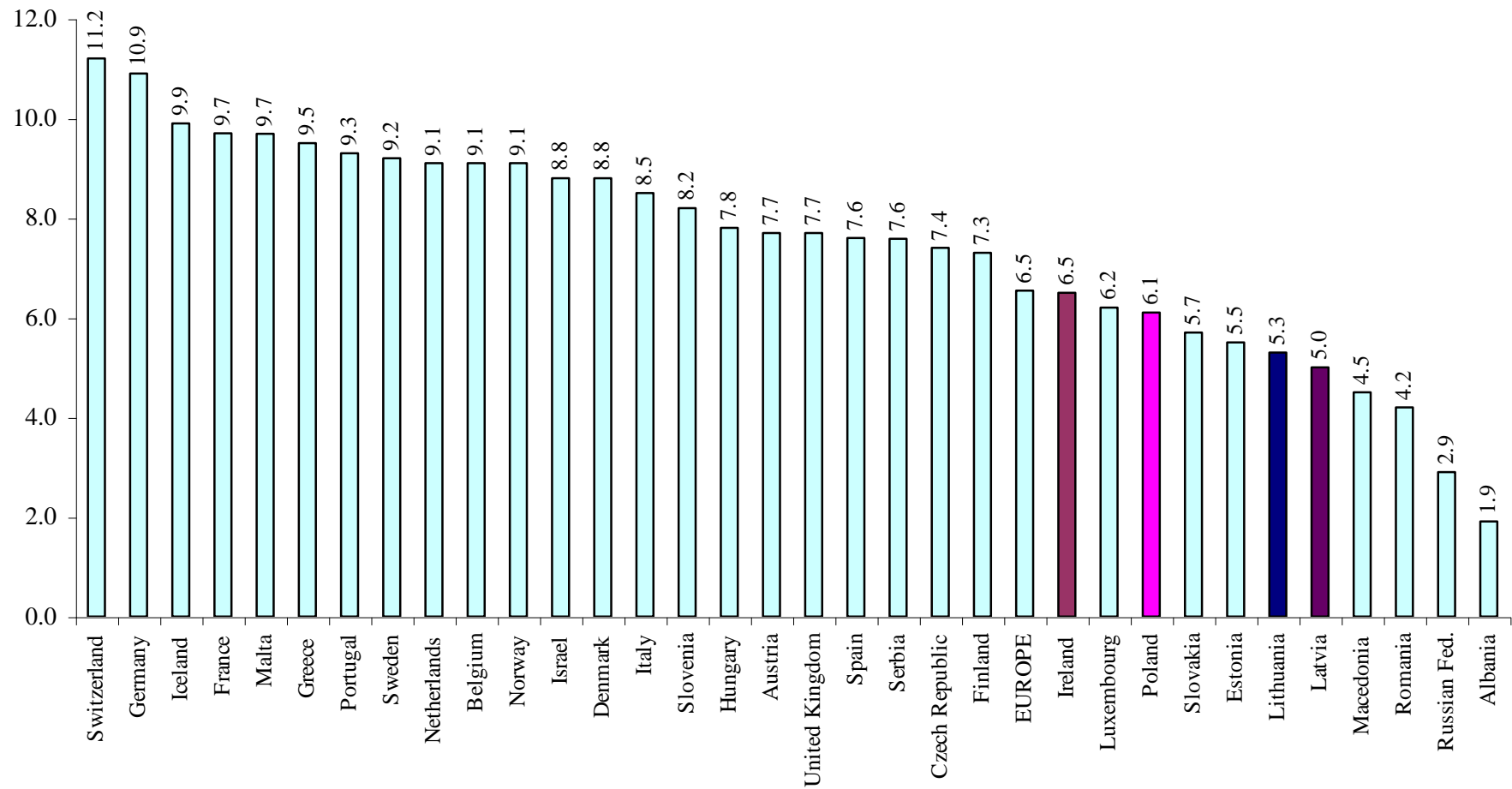
\*) Per 100,000 male population

\*\*\*) Per 100,000 female population

\*\*\*) Data for Estonia - 2002



Total health care expenditures as % of GDP



Note: WHO data 2000-2003; data for Estonia - 2002, Latvia and Lithuania – 2003

\*Estonia – calculated using the OECD manual

## Obstetric Definitions

Live birth -	Foetus that after complete expulsion or extraction from its mother breathes or shows any other evidence of life, irrespective of the duration of the pregnancy.	Perinatal death -	Foetal deaths and live-born infants that die at the age of 0 to 6 full days of life. Standard rate is used for international comparison including births with a weight of 1000 g or more.
Foetal death -	Death prior to the complete expulsion or extraction from its mother of a product of conception after 22 weeks of gestation. Standard rate is used for international comparison including births with a weight of 1000 g or more.	Maternal death -	The death of a woman while pregnant or within 42 days after termination of pregnancy, irrespective of the duration and the site of the pregnancy, from any cause related to or aggravated by the pregnancy or its management, but not from accidental or incidental causes.
Infant death -	Live-born infant that dies during the first year of life.	Abortion -	Spontaneous or induced (legal, therapeutic, criminal) abortion is pregnancy termination or artificial extraction of the product of the conception during the first 22 weeks of gestation.
Neonatal death -	Death occurring at the age of 0 to 27 full days of life (27 days 23 hours 59 min.). The first day of life is considered as day zero.	Total fertility rate -	The average number of children that would be born per woman if all women lived to the end of their childbearing years and bore children according to a given set of age-specific fertility rates.
Early neonatal death -	Death occurring at the age of 0 to 6 full days of life (6 days 23 hours 59 min.). The first day of life is considered as day zero.		

## Sources

1. Statistical Yearbook of Estonia 2003. Statistical Office of Estonia. Tallinn, 2003
2. Regional Statistics of Estonia 2002. Statistical Office of Estonia. Tallinn, 2003
3. Monthly Bulletin No 4 (136) 2003. Statistical Office of Estonia. Tallinn, 2003
4. Estonian Health Statistics 2000-2002. Ministry of Social Affairs of Estonia. Tallinn, 2003
5. Statistical database on the website of Statistical Office of Estonia <http://www.stat.ee>
6. Demography 2004. Central Statistical Bureau of Latvia. Riga, 2004
7. Monthly Bulletin of Latvian Statistics No.1 (116) 2004. Central Statistical Bureau of Latvia. Riga, 2004
8. Yearbook of Healthcare Statistics in Latvia 2003. Latvian Health Statistics and Medical Technology Agency, Health Statistics Department. Riga, 2004
9. Statistical Yearbook of Lithuania 2003. Department of Statistics to the Government of the Republic of Lithuania. Vilnius, 2004.
10. Demographic Yearbook 2003. Department of Statistics to the Government of the Republic of Lithuania. Vilnius, 2004.
11. Health Statistics of Lithuania 2003. Lithuanian Health Information Centre. Vilnius, 2004.
12. Health Statistics in the Nordic Countries 2002. NOMESCO 69:2004.
13. Health for All. Statistical Database. WHO Regional Office for Europe. Version June 2004.